

1. Describe eight golden design rules.
2. Individual window design.
3. VRML and its applications.
4. Imagine that you are a teacher at University. When you teach programming course in the class Jukkola you have to run between student working places to check solutions.
 - How could you improve teaching by using computer-supported cooperative work system?
 - Describe a common teacher strategy in this case.
 - Describe a possible problem for this case.
5. Color used in graphic user interface systems
 - What is the reason that color must be used in conjunction with the other visual variables such as position, texture, shape, size, orientation, value (lightness)?
 - How can red and orange colors be used in plant control systems and air traffic control systems?
 - How does human perception react on large areas with saturated colors?
 - It is not recommended to use colored text on a colored background. Why?
6. Tell about errors in design for both figures.

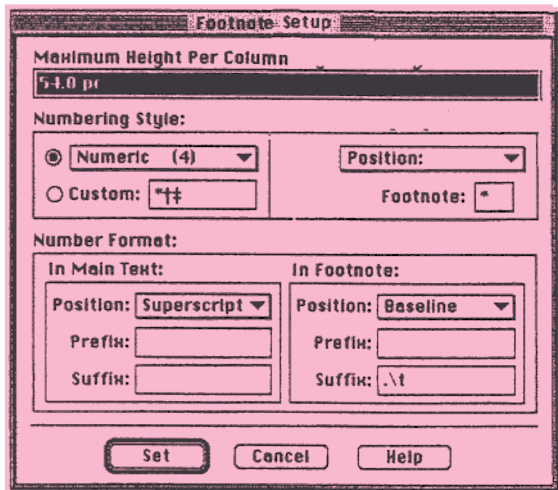


Figure 1:

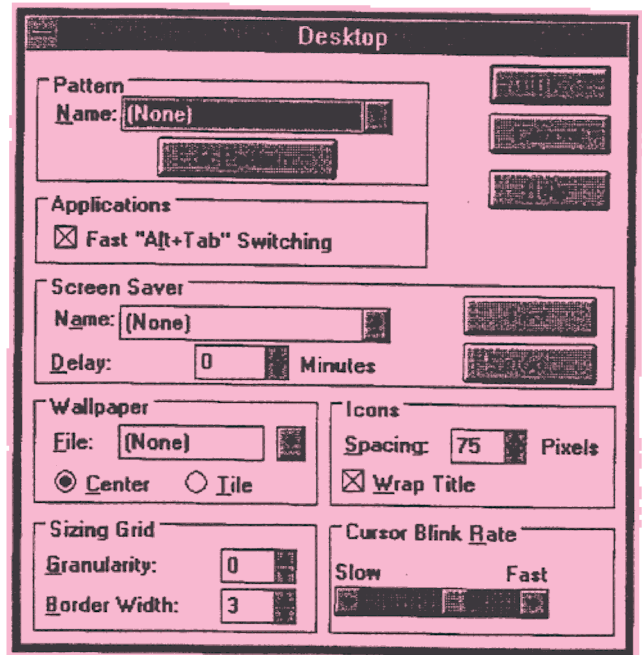


Figure 2: